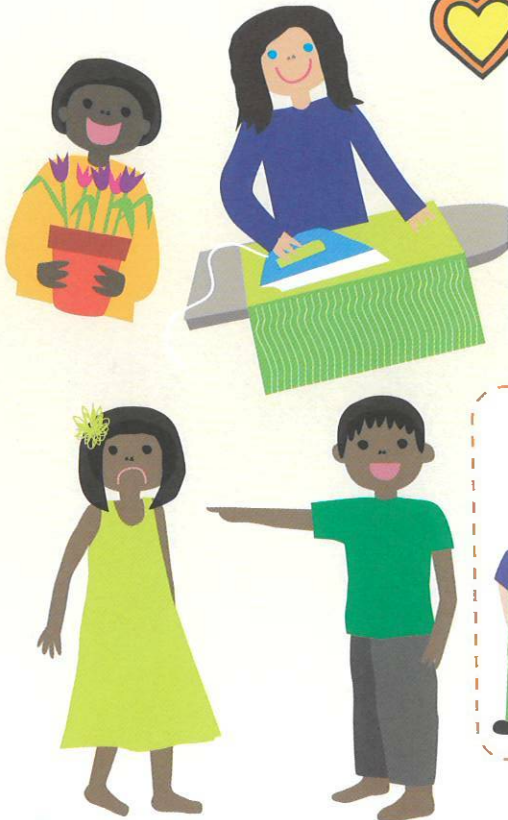




In the
GOSPEL TODAY

Spot the disciple

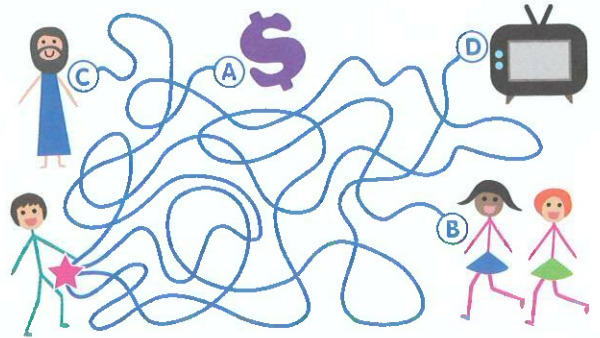
Which of these people is being like Jesus? Put a circle round anyone you think is being a disciple and copying what they have learned about Jesus.



Nothing is more important than Jesus! A builder makes sure his tower has firm foundations. Our lives will have firm foundations if we put Jesus first. Living as Jesus asks and loving other people may not always be easy, but Jesus will help us and we will be happy forever with Jesus as our friend.

Which path?

It's not always easy following Jesus. Sometimes we go the wrong way. Can you find the right path to Jesus here?



I need...

Cross out the words that do not belong.

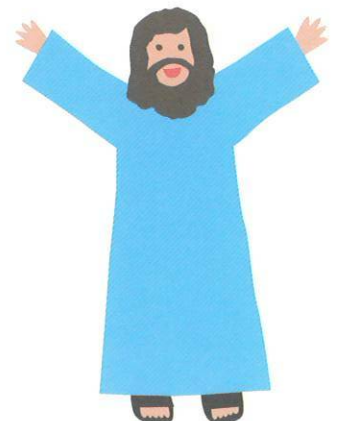
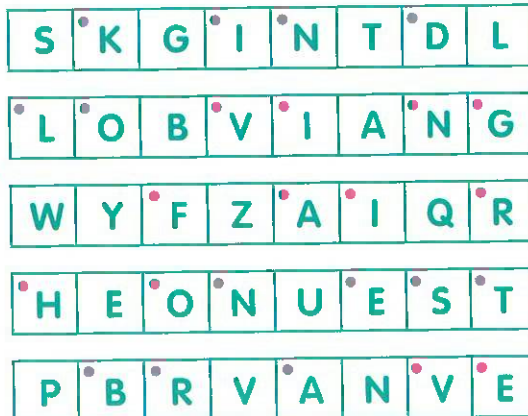


To follow Jesus I will need...

- love
- hate
- understanding
- kindness
- courage
- patience

What is Jesus like?

Colour in the boxes with dots to see some words which describe Jesus.



A PRAYER TO SAY

Jesus, you are more important than anything else in the whole world! Thank you for loving me so much. Help me to share your love with everyone I meet. Amen.