

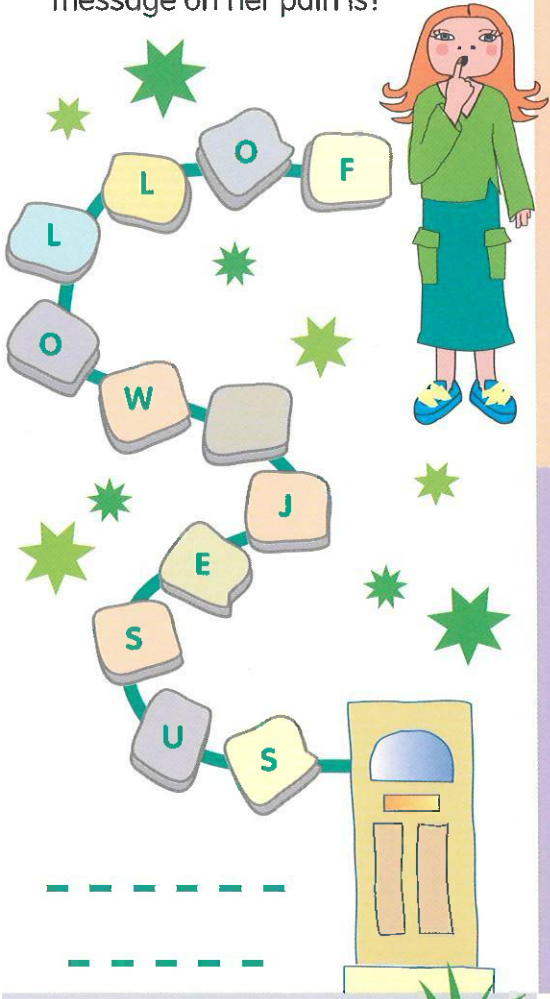


Sunday 21 August 2022
 Luke 13:22-30
 21st Sunday in Ordinary Time

In the
GOSPEL TODAY

How to get through the narrow door

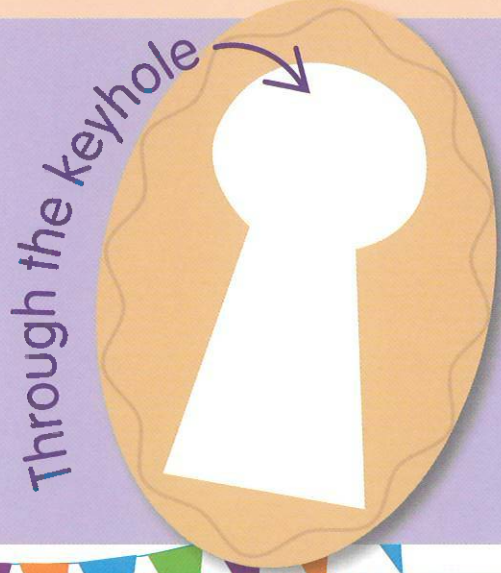
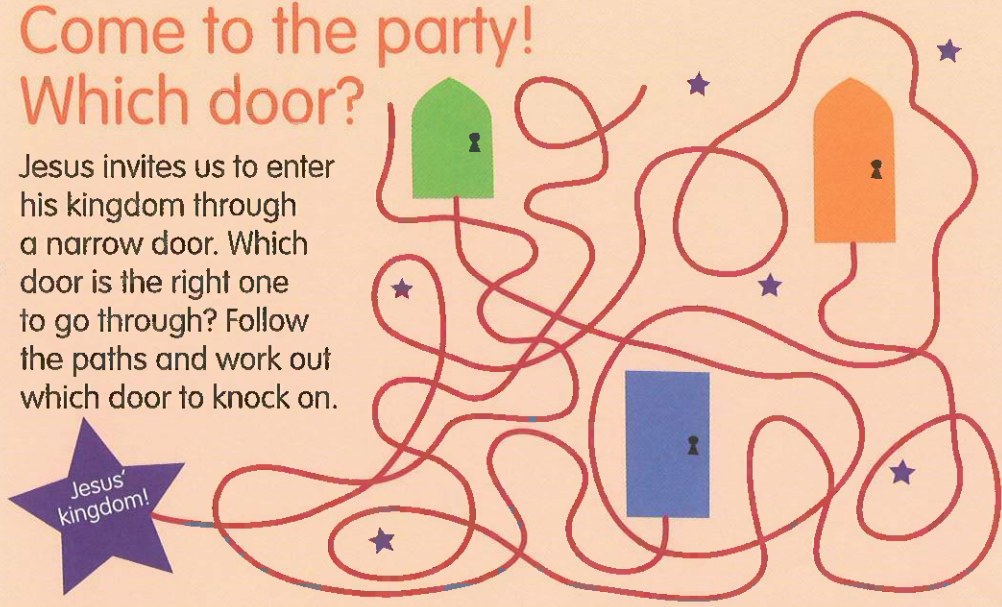
Hester is trying to find the way to Jesus through the narrow door. Can you find out what the message on her path is?



Jesus invites everyone to come to his party! We can get to the party through a narrow door. We go through the narrow door when we follow Jesus and put other people before ourselves.

Come to the party! Which door?

Jesus invites us to enter his kingdom through a narrow door. Which door is the right one to go through? Follow the paths and work out which door to knock on.



Jesus' kingdom is like a big party. Have a look through the keyhole in the narrow door. Jesus invites everyone to his party, even the people no one else might want to invite. Who would you invite to a party? Draw what you can see of the fabulous party you'd like to join. Draw the people you'd let through the narrow door.

A PRAYER TO SAY

Thank you, Jesus, for inviting me to your party. Help me to follow your example and put other people before myself. Help me to share your love with everyone I meet today by speaking kindly and helping out at home. Amen.



My invitation

Jesus invites(your name)
 to his party.
 Come in through the narrow door.